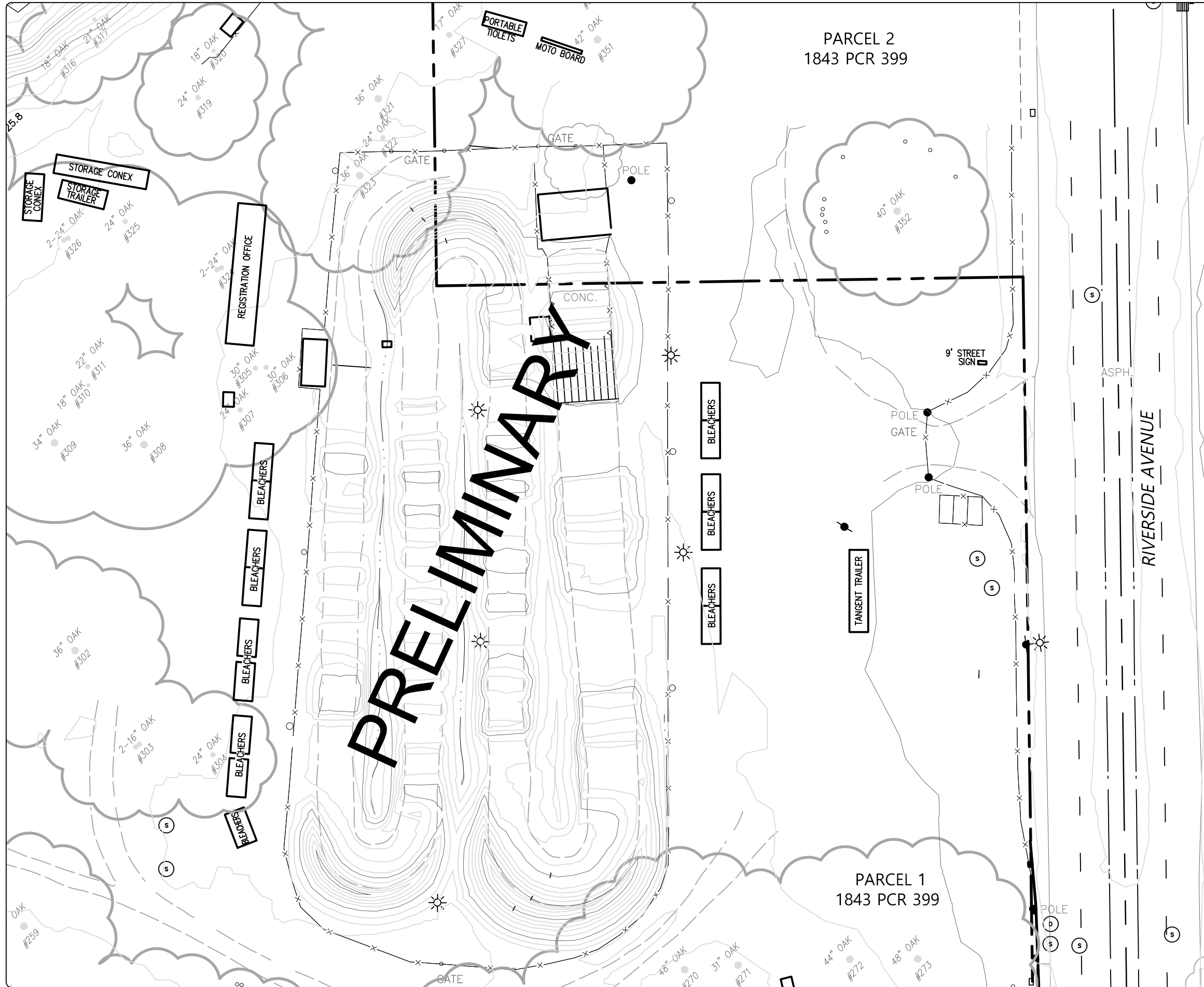
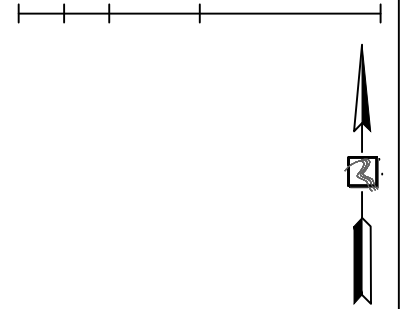


# OAK CREEK BMX SITE PLAN

## 648 ROSEVILLE AVENUE

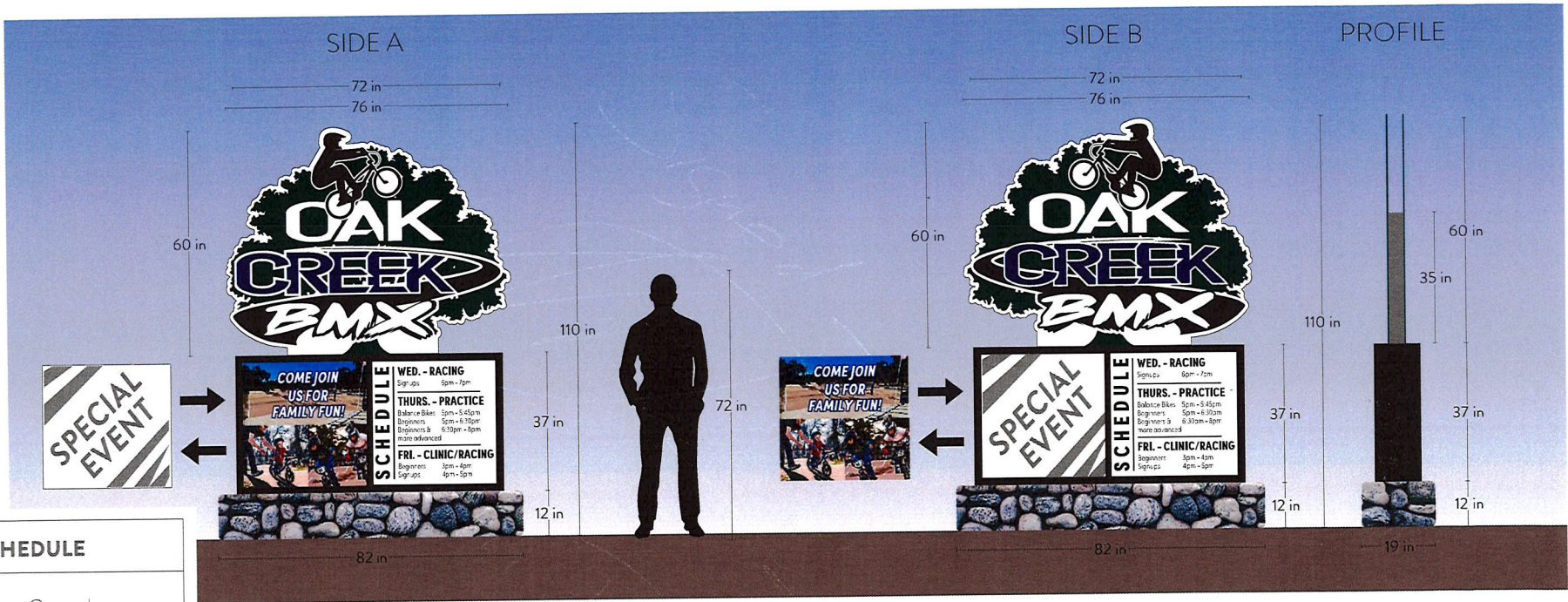
ROSEVILLE, CALIFORNIA  
JUNE 19, 2023

SCALE: 1"=40'



**TOPOGRAPHY**  
BY AERIAL PHOTOGRAMMETRY METHODS COMPLETED  
APRIL 2020. SUPPLEMENTAL FEATURES  
SUBSEQUENT TO APRIL 2020 SHOWN HEREON ARE  
APPROXIMATE.

905 Sutter Street, Suite 200, Folsom, CA 95630  
(916) 366-3040 Fax (916) 366-3303  
**R. E. Y. ENGINEERS, Inc.**  
Civil Engineers / Land Surveyors



**COLOR SCHEDULE**

-  Texture Coated Black Monument
-  River Rock Base

**JOB SPECIFICATIONS**

Qty (1) D/S Non-Illum. Texture Coated Monument w/ Routed Alum. Header & River Rock Base  
 Slide-In Cabinet w/ 2" retainer and 1 1/2" Divider for qty 2 lexan faces (each Side) with Black HP Vinyl & Digital Printed Graphics - Routed Aluminum Header w/ HP Black Vinyl and Digital Print Graphics

DESIGNER

*DR*

**! SIGNATURE REQUIRED BEFORE PRODUCTION WILL BEGIN**

SIGN: \_\_\_\_\_  
 PRINT: *Nathan*  
 DATE: \_\_\_\_\_

*Signed Nathan Johanson*



CLIENT: Oak Creek BMX  
 CONTACT: Nathan Johanson  
 EST/INVOICE: 48222  
 ADDRESS: 648 Riverside Ave  
 Roseville, CA 95678

JOBSITE: Same  
 ADDRESS: \_\_\_\_\_  
 SHIP OUT:  INSTALL:   
 PICKUP:

PROOFING

12/16/22 Artwork Proof - Conceptualizing  
 12/20/22 Revised Artwork - Finalizing Design

DR  
 DR

This is an original drawing by Capital City Signs Inc. It is submitted for your approval in connection with a project being planned for you by CCS, Inc. It is not to be reproduced, copied, or otherwise used in any fashion without the written permission of CCS, Inc.  
 Please Note: Colors as displayed on this Conceptual Drawing are for presentation purposes only. Actual colors of final products may vary.